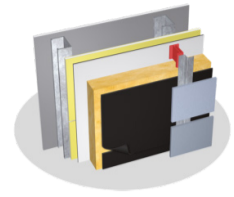


DELTA®-FASSADE S KEY MESSAGES FOR APPLICATOR NEW TO PRODUCT/SOLUTION – NOT USING ANY WATER BARRIER FOR OPEN-JOINT CLADDING APPLICATIONS



Insulation left exposed in open-façade cladding designs is subject to extreme water and moisture damage, which can impact the overall building performance and lifespan.

- When insulation underneath façade is exposed, it is subject to harsh elements, such as wind, water, and extreme weather
- Not only will these conditions start to break down the materials, but leaving these systems without barrier protection will also allow for leakage, impacting building efficiency, occupant comfort and, ultimately, building life
- Resulting moisture damage, including mold, is a leading cause of complaints and call-backs from occupants and building owners

Water-resistive barriers provide an essential layer of protection that keeps water and moisture out of the system for better building performance and, ultimately, better customer comfort and satisfaction.

- Specialty barriers are built to withstand constant exposure to UV and the elements, in order to keep building components protected
- Essentially, these materials provide a secure wind- and water-tight barrier that acts as a drainage plane for effective weather protection
- Using a UV-stable, water-resistive barrier protects the building from moisture damage (such as mold) and heating and cooling losses, and protects the insulation from wind washing, water, and UV damage
- Although it's an added step, the right system can not only be highly efficient, but also take away from any time spent addressing problems in the long run

DELTA®-FASSADE S provides the best in moisture protection without impacting installation schedules and resources.

- DELTA®-FASSADE S is a highly vapor permeable, watertight membrane that integrates well with most open-joint cladding systems, e.g. Trespa, Swisspearl, Eternit, Fundermax, etc.
- The matte black color of DELTA®-FASSADE S supports overall design goals for open-façade buildings, while also eliminating glare during installation
- DELTA®-FASSADE S is UV stabilized to withstand *permanent* exposure, meaning it is able to maintain both its appearance and quality for longer performance

DELTA®-FASSADE S is supported by a simple system of installation components for easy, reliable, and less time-consuming application.

- With a complete system, you don't have to worry about leaving any gaps or spaces during installation – the building will have a continuous barrier
- The DELTA®-FASSADE S system includes DELTA®-FAS CORNER, DELTA®-THAN, DELTA®-FLEXX-BAND, DELTA®-FASSADE FLASHING, and DELTA®-FASSADE TAPE
- The system is lightweight as well as strong and tear resistant, so it stands up to the sometimes difficult conditions of worksites

DELTA®-FASSADE S is backed by industry-leading technical resources to help Applicators throughout the selection and installation process.

- DELTA®-FASSADE S comes with installation videos, training, and the best technical manuals in the industry
- All DELTA® products are backed by unmatched technical and application support
- Having the complete, manufacturer-designed system of accessories coupled with technical resources takes any complexities, challenges, or inconsistencies out of the process for better application and overall performance