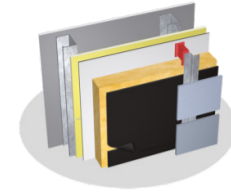


DELTA®-FASSADE S KEY MESSAGES FOR APPLICATOR CURRENTLY USING COMPETITOR PRODUCT



DELTA®-FASSADE S provides the best in moisture protection, without compromising design or impacting installation schedules and resources.

- DELTA®-FASSADE S is a highly vapor permeable, watertight membrane that integrates well with most open-joint cladding systems, e.g. Trespa, Swisspearl, Eternit, Fundermax, etc.
- DELTA®-FASSADE S can reduce your labor costs; the application is faster and safer than liquids/sprays because there are no blowing agents or drying time to account for
- The matte black color of DELTA®-FASSADE S supports overall design goals for open-façade buildings, while also eliminating glare during installation
- DELTA®-FASSADE S is UV stabilized to withstand *permanent* exposure, meaning it is able to maintain both its appearance and quality, for longer performance

DELTA®-FASSADE S is supported by a simple system of installation components for easy, reliable, and less time-consuming application.

- With a complete system, you don't have to worry about leaving any gaps or spaces during installation – the building will have a continuous barrier
- The DELTA®-FASSADE S system includes DELTA®-FAS CORNER, DELTA®-THAN, DELTA®-FLEXX-BAND, DELTA®-FASSADE FLASHING, and DELTA®-FASSADE TAPE
- The system is lightweight as well as strong and tear resistant, so it stands up to the sometimes difficult conditions of worksites

DELTA®-FASSADE S is backed by industry-leading technical resources to help Applicators throughout the selection and installation process.

- DELTA®-FASSADE S comes with installation videos, training, and the best technical manuals in the industry
- All DELTA® products are backed by unmatched technical and application support
- Having the complete, manufacturer-designed system of accessories coupled with technical resources takes any complexities, challenges, or inconsistencies out of the process for better application and overall performance