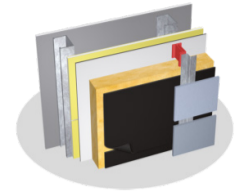


DELTA®-FASSADE S KEY MESSAGES FOR ARCHITECT USING COMPETITOR PRODUCT



The first of its kind introduced to the North American market, DELTA®-FASSADE S provides an essential layer of protection that keeps water and moisture out of the system for better building performance, and is designed to maximize building protection while enhancing the design aesthetics in open-joint cladding applications.

- DELTA®-FASSADE S is a highly vapor permeable, watertight membrane that delivers the best in building performance and moisture control
- The advanced ability of DELTA®-FASSADE S to reduce wind washing of insulation also provides enhanced energy efficiency, helping maintain R-values and reducing heat loss
- The matte black color of DELTA®-FASSADE S gives the building appearance additional depth and dimension, adding to the overall visual appeal of the project
- DELTA®-FASSADE S integrates well with most open-joint cladding systems, e.g. Trespa, Swisspearl, Eternit, Fundermax, etc.

DELTA®-FASSADE S is UV stabilized to withstand *permanent* exposure, meaning it is able to maintain both its appearance and quality, to perform longer.

- It is the *only* UV-resistant barrier solution for open-joint cladding available on the market that has been tested to and passed ICC-AC38
- Its acrylic coating ensures weatherproof performance that won't break down, no matter the environment

The exclusive technology of DELTA®-FASSADE S is backed by years of proven performance and unmatched industry credentials.

- As the first water-resistive barrier of its kind, DELTA®-FASSADE S was developed based on the philosophy of "no compromise"
- Extensive research and testing went into creating the product, developed to allow architects the opportunity to be innovative while still protecting their greatest investments
- DELTA®-FASSADE S is now well known in the industry for its superior ability to protect buildings and is still the only UV-resistant barrier solution for open-joint cladding available on the market that has been tested to and passed ICC-AC38