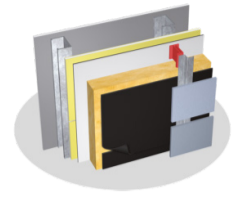


## DELTA®-FASSADE S KEY MESSAGES FOR GENERAL CONTRACTOR USING COMPETITOR PRODUCT



**DELTA®-FASSADE S maximizes building protection while enhancing the design aesthetics in open-joint cladding applications, for overall better building performance.**

- DELTA®-FASSADE S is a highly vapor permeable, watertight membrane that delivers the best in building performance and moisture control
- DELTA®-FASSADE S integrates well with most open-joint cladding systems, e.g. Trespa, Swisspearl, Eternit, Fundermax, etc.
- The matte black color of DELTA®-FASSADE S ensures visual appeal needs are met, while also reducing glare during application process

**DELTA®-FASSADE S is UV stabilized to withstand permanent exposure, meaning it is able to maintain both its appearance and quality for longer performance than other solutions on the market.**

- It is the *only* UV-resistant barrier solution for open-joint cladding available on the market that has been tested to and passed ICC-AC38
- Its acrylic coating ensures weatherproof performance that won't break down, no matter the environment
- The system is also lightweight as well as strong and tear resistant, so it not only stands up to extreme conditions, but also the rigors of worksites

## DELTA®-FASSADE S is supported by a simple system of installation components for easy, reliable, and less time-consuming application.

- With a complete system, there are no concerns about gaps or spaces left during installation – the building will have a continuous barrier
- The DELTA®-FASSADE S system includes DELTA®-FAS CORNER, DELTA®-THAN, DELTA®-FLEXX-BAND, DELTA®-FASSADE FLASHING, and DELTA®-FASSADE TAPE